



Hyde Park Place, Hyde Park, London, W2

Asking Price - £2,950,000
Share of Freehold

 3  2

This property comprises:

- Reception Room
- Kitchen With Open Plan Dining Room
- Bedroom With En Suite Bathroom
- Two Further Bedrooms
- Shower Room
- Cloakroom

Situated on the second floor, with lift access, this spacious lateral three bedroom apartment has uninterrupted views over Hyde Park from the generously proportioned reception room and bright kitchen/dining room. The apartment further benefits from a share of the freehold. All three bedrooms are positioned to the rear of the building, with a quiet outlook and there is ample storage located throughout the property. The property further comprises of two bathrooms (one ensuite) and a guest cloakroom. Positioned in close proximity to the restaurants and fashionable shops of Mayfair and Marylebone, this property offers both the green open space of the Hyde Park on its doorstep, as well as all the stylish amenities these districts of London has to offer. Transport connections are conveniently positioned with Marble Arch, Bond Street, Lancaster Gate and Paddington stations all nearby.

Hyde Park Place, Hyde Park, London, W2



Asking Price - £2,950,000



Amenities:

Lift

Tenure:

Share of Freehold

Ground Rent:

TBA


Service Charge:

£8,500 per annum (approximately)

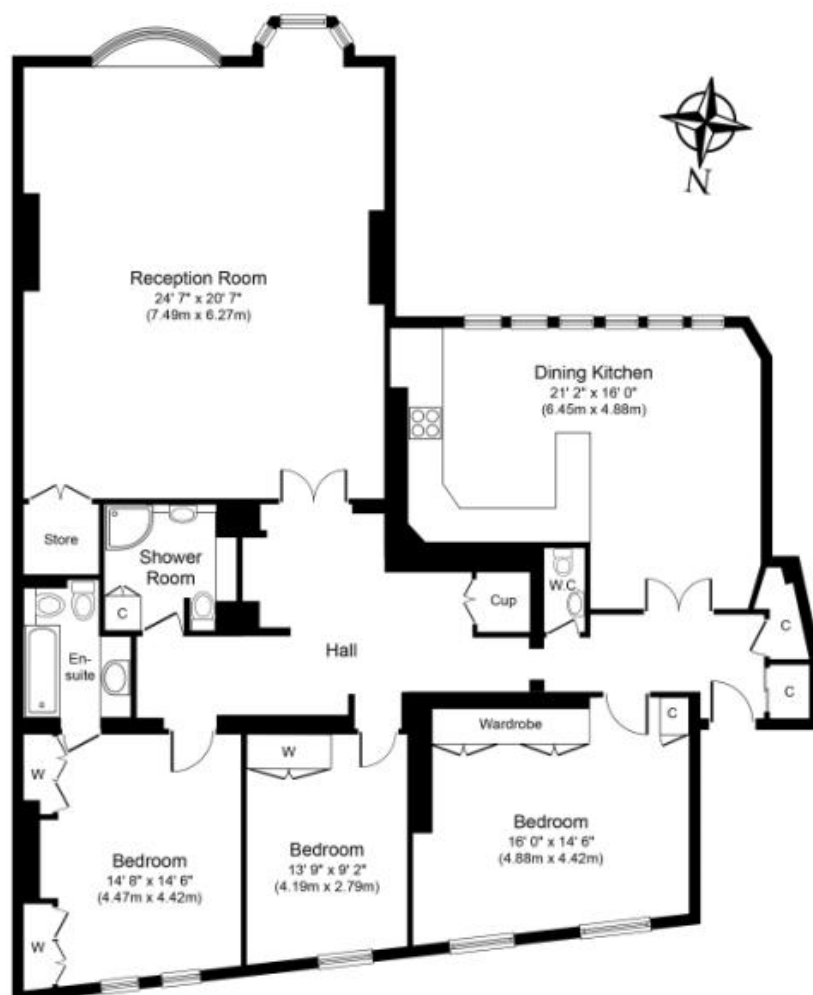
Price:

£2,950,000

Energy Efficiency Rating

	Current	Potential
<i>Very energy efficient - lower running costs</i>		
(92+) A		
(81-91) B		87
(69-80) C	78	
(55-68) D		
(39-54) E		
(21-38) F		
(1-20) G		
<i>Not energy efficient - higher running costs</i>		
England, Scotland & Wales	EU Directive 2002/91/EC	

Second Floor Apartment



In accordance with the Consumer Protection from Unfair Trading Regulations 2008 (CPRs) and the Business Protection from Misleading Markets Regulations 2008 (BPRs) Manors have prepared these property particulars as a general guide to a broad description of the property. Manors as agents for the vendor or lessor and for themselves give notice that (a) these particulars are not intended to constitute part of an offer or contract (b) have not carried out a structural survey and the services, appliances and fittings have not been tested (c) all measurements, photographs, distances and floor plans referred to are given as a guide only and should not be relied upon for the purchase of fixtures and fittings (d) tenure details, service charges and ground rent (where applicable) are given as a guide only and should be checked and confirmed by your solicitor prior to exchange of contracts (e) neither the vendor nor any person in the employ of Manors has any authority to make or give any representation or warranty whatsoever in respect of the property.